

PRESSURE SPRAY GUNS

W-200 INTEGRA PRESSURE SERIES

The **W-200 INTEGRA** is the sophisticated successor of Anest Iwata's previous W-200 lineup. While they look almost the same almost all of the internals have been redesigned and improved. This makes the new **W-200 INTEGRA** your perfect companion for challenging jobs in the Industrial paint application. The **W-200 INTEGRA SP** utilizing the unique Anest Iwata **SPLIT NOZZLE** Technology can easily be recognized by its **BLUE** Air Cap Ring. While the models **W-200 INTEGRA FT** with traditional Flat tips (FT versions) come with **SILVER** Air Cap Ring.

W-200 INTEGRA SP PREMIUM QUALITY

SPLIT NOZZLE™ PRE-ATOMIZATION TECHNOLOGY

TECHNICAL DATA	Ø mm	No.	bar range	m ³ /min	l/min range	mm
W-200 INTEGRA SP - Pressure Spray Gun - Air Nipple: G1/4" • Fluid Nipple: G3/8"						
W-200SP-08WB1P	0.8	WB1	2.0 ~ 2.5	200	425 ~ 531	360
W-200SP-10WB1P	1.0			250		380
W-200SP-12WB1P	1.2			300		390
W-200SP-14WB1P	1.4			350		310
W-200SP-08WBSP	0.8	WBS	2.0 ~ 2.5	200	463 ~ 578	320
W-200SP-10WBSP	1.0			250		330
W-200SP-12WBSP	1.2			300		340
W-200SP-14WBSP	1.4			350		
SPRAY DISTANCE: 150 ~ 300 mm						



ORDER

W-200 INTEGRA

INFORMATION

	Ø 0.8	Ø 1.0	Ø 1.2	Ø 1.4	£
W-200 INTEGRA SPRAY GUN - WB1	130451A0	130452A0	130453A0	130454A0	414.21
W-200 INTEGRA SPRAY GUN - WBS	130455A0	130456A0	130457A0	130458A0	414.21
AIR CAP SET - WB1	93017310				103.43
AIR CAP SET - WBS	93017430				103.43
FLUID NOZZLE + FLUID NEEDLE SET	93012030	93012020	93012010	93017330	139.14



W-200 INTEGRA FT PREMIUM QUALITY

FLAT TIP NOZZLE

TECHNICAL DATA	Ø mm	No.	bar range	m ³ /min	l/min range	mm
W-200 INTEGRA FT - Pressure Spray Gun - Air Nipple: G1/4" • Fluid Nipple: G3/8"						
W-200SP-08LV2P	0.8	LV2	2.0 ~ 2.5	70	240 ~ 300	140
W-200SP-10LV2P	1.0			110		170
W-200SP-12LV2P	1.2			150		220
W-200SP-15LV2P	1.5			250		270
W-200SP-08G2P	0.8	G2P	3.0 ~ 3.5	500	500 ~ 583	400
W-200SP-10G2P	1.0					
W-200SP-12G2P	1.2					
SPRAY DISTANCE: 150 ~ 300 mm						



ORDER

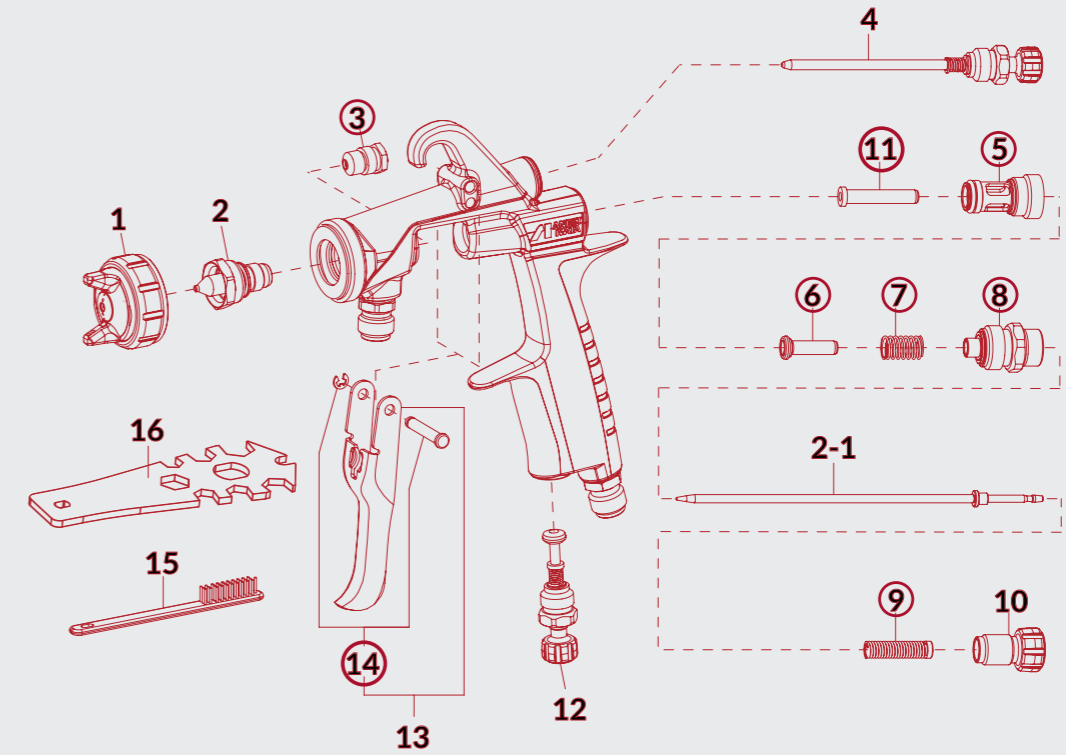
W-200 INTEGRA

INFORMATION

	Ø 0.8	Ø 1.0	Ø 1.2	Ø 1.5	£
W-200 INTEGRA SPRAY GUN - LV2	130459A0	130460A0	130461A0	130463A0	338.90
W-200 INTEGRA SPRAY GUN - G2P	130464A0	130465A0	130466A0	----	338.90
AIR CAP SET - LV2	93017360				103.43
AIR CAP SET - G2P	93011670				103.43
FLUID NOZZLE + FLUID NEEDLE SET	93017270	93017280	93011570	93011680	103.43



LOW PRESSURE



CARTON BOX

W-200 INTEGRA Pressure Spray Gun
Cleaning Brushes
Universal Spanner



SPARE PARTS

REF.	CODE	DESCRIPTION	£
1	see left	AIR CAP SET (WB1 - WBS1)	103.43
1	see left	AIR CAP SET (LV2)	103.43
1	see left	AIR CAP SET (G2P)	103.43
1-1	93017700	CAP COVER PACKING SET	9.70
1-2	93011560	AIR CAP RING Silver	38.90
1-2	93016870	AIR CAP RING Blue	41.70
2 + 2-1	see left	FLUID NOZZLE + NEEDLE SET (W-200SP)	139.14
2 + 2-1	see left	FLUID NOZZLE + NEEDLE SET (W-200FT)	103.43
3	93810620	NEEDLE PACKING SET	23.16
4	93011630	PATTERN ADJUSTMENT	38.90
5	93001640	AIR VALVE SEAT SET	21.65
6	93001690	AIR VALVE	13.71
7	93001700	AIR VALVE SPRING	6.15
8	93012630	FLUID ADJUSTMENT GUIDE SET	33.30
9	93002820	NEEDLE SPRING SET	8.64
10	93012650	FLUID ADJUSTMENT KNOB	13.30
11	93001790	AIR VALVE SHAFT	13.90
12	93012660	AIR ADJUSTMENT SET	35.10
13	93014500	TRIGGER SET	22.20
14	93013810	TRIGGER STUD	6.90

ACCESSORIES

FLUID TUBE



PUSH-PULL PATTERN ADJ. SET



QUICK FAN PATTERN CONTROL



ACCESSORIES

CODE	DESCRIPTION	REF.	£
W2COM6163	BRUSHES (5 PCS/1PK)	15	8.76
930171A0	UNIVERSAL SPANNER	16	8.60
930356A0	REPAIRING KIT includes: needle packing set (3), air valve seat set (5), air valve (6), air valve spring (7), fluid adj. guide set (8), needle spring set (9), air valve shaft (11), trigger stud set (14).		138.80
14375800	"L" ROTATING AIR HOSE JOINT		27.31
W-200-X1	QUICK FAN PATTERN CONTROL		195.70
93895611	PUSH-PULL PATTERN ADJ. SET		181.62
W2COM5052	FLUID TUBE 3/8" Stainless Steel		74.38
001004050	TWIN HOSE (Air and Fluid) 1/4"-1/4" - 5 m		91.63
001004075	TWIN HOSE (Air and Fluid) 1/4"-1/4" - 7.5 m		119.71
001004100	TWIN HOSE (Air and Fluid) 1/4"-1/4" - 10 m		151.28

SUCTION SPRAY GUNS

W-200 INTEGRA SUCTION SERIES

W-200 INTEGRA SP PREMIUM QUALITY

SPLIT NOZZLE™ PRE-ATOMIZATION TECHNOLOGY

TECHNICAL DATA	Ø mm	No.	bar range	ml/min	l/min range	mm
W-200 INTEGRA SP - Suction Spray Gun - Air Nipple: G1/4" • Fluid Nipple: G3/8"						
W-200SP-16WB2S	1.6	WB2	2.0 ~ 2.5	170	480 ~ 538	315
W-200SP-18WB2S	1.8	WB2	2.0 ~ 2.5	200	480 ~ 538	330
SPRAY DISTANCE: 150 ~ 300 mm						



PCL-10B3
Suction Container 1lt.



ORDER

W-200 INTEGRA

INFORMATION

	Ø 1.6	Ø 1.8	£
W-200 INTEGRA - Spray Gun Only	130471A0	130472A0	463.90
W-200 INTEGRA - With PCL-10B3 Cup	130478A0	130479A0	519.40
W-200 INTEGRA - With PC-12 Cup	130485A0	130486A0	508.30
AIR CAP SET - WB2	93017460		103.43
FLUID NOZZLE + FLUID NEEDLE SET	93017480	93017490	139.14

W-200 INTEGRA FT PREMIUM QUALITY

FLAT TIP NOZZLE

TECHNICAL DATA	Ø mm	No.	bar range	ml/min	l/min range	mm
W-200 INTEGRA FT - Suction Spray Gun - Air Nipple: G1/4" • Fluid Nipple: G3/8"						
W-200FT-14S	1.4	LV2	2.0 ~ 2.5	240	240 ~ 300	260
W-200FT-15S	1.5	K2		240	220 ~ 275	290
W-200FT-18S	1.8	K2	290	220 ~ 275	340	
W-200FT-20S	2.0	R2	350	240 ~ 300	290	
W-200FT-25S	2.5	W1	440	240 ~ 300	280	
SPRAY DISTANCE: 150 ~ 300 mm						



PC-12
Suction Container 1lt.



ORDER

W-200 INTEGRA

INFORMATION

	Ø 1.4	Ø 1.5	Ø 1.8	Ø 2.0	Ø 2.5	£
W-200 INTEGRA - Spray Gun Only	130473A0	130474A0	130475A0	130476A0	130477A0	338.90
W-200 INTEGRA - With PCL-10B3 Cup	130480A0	130481A0	130482A0	130483A0	130484A0	394.40
W-200 INTEGRA - With PC-12 Cup	130487A0	130488A0	130489A0	130490A0	130491A0	383.30
AIR CAP SET	LV2	K2		R2	W1	103.43
	93017360	93011710		93011790	93011820	103.43
FLUID NOZZLE + FLUID NEEDLE SET	93017370	93011680	93011730	93011740	93011810	103.43

LOW PRESSURE



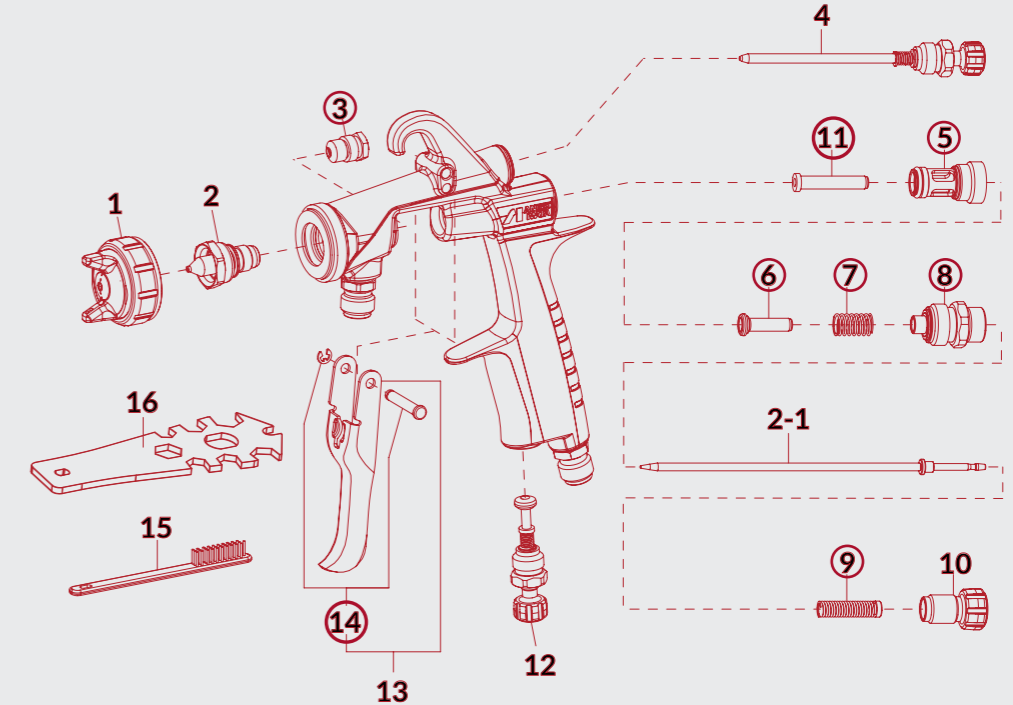
PCL-10B3

Suction Container 1lt.



PC-12

Suction Container 1lt.



CARTON BOX

W-200 INTEGRA Suction Spray Gun
Cleaning Brushes
Universal Spanner
Suction Cup

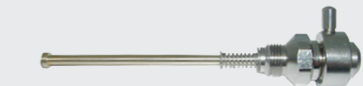


ACCESSORIES

PUSH-PULL PATTERN ADJ. SET



QUICK FAN PATTERN CONTROL



SPARE PARTS

REF.	CODE	DESCRIPTION	£
1	see left	AIR CAP SET (WB2)	103.43
1	see left	AIR CAP SET (LV2 - K2 - R2 - W1)	103.43
1-1	93017700	CAP COVER PACKING SET	9.70
1-2	93011560	AIR CAP RING Silver	38.90
1-2	93016870	AIR CAP RING Blue	41.70
2 + 2-1	see left	FLUID NOZZLE + NEEDLE SET (W-200SP)	139.14
2 + 2-1	see left	FLUID NOZZLE + NEEDLE SET (W-200FT)	103.43
3	93810620	NEEDLE PACKING SET	23.16
4	93011630	PATTERN ADJUSTMENT	38.90
5	93001640	AIR VALVE SEAT SET	21.65
6	93001690	AIR VALVE	13.71
7	93001700	AIR VALVE SPRING	6.15
8	93012630	FLUID ADJUSTMENT GUIDE SET	33.30
9	93002820	NEEDLE SPRING SET	8.64
10	93012650	FLUID ADJUSTMENT KNOB	13.30
11	93001790	AIR VALVE SHAFT	13.90
12	93012660	AIR ADJUSTMENT SET	35.10
13	93014500	TRIGGER SET	22.20
14	93013810	TRIGGER STUD	6.90

ACCESSORIES

CODE	DESCRIPTION	REF.	£
W2COM6163	BRUSHES (5 PCS/1PK)	15	8.76
93505910	UNIVERSAL SPANNER	16	8.60
14018621	PCL-10 B3 LEVER LOCK SUCTION CUP 1 lt.		85.84
14018200	PC 12 SUCTION CUP 1 lt.		112.30
930171A0	REPAIRING KIT includes: needle packing set (3), air valve seat set (5), air valve (6), air valve spring (7), fluid adj. guide set (8), needle spring set (9), air valve shaft (11), trigger stud set (14).		138.80
14375800	"L" ROTATING AIR HOSE JOINT		27.31
W-200-X1	QUICK FAN PATTERN CONTROL		195.70
93895611	PUSH-PULL PATTERN ADJ. SET		181.62
W2COM5052	FLUID TUBE 3/8" Stainless Steel		74.38
001004050	TWIN HOSE (Air and Fluid) 1/4"-1/4" - 5 m		91.63
001004075	TWIN HOSE (Air and Fluid) 1/4"-1/4" - 7.5 m		119.71
001004100	TWIN HOSE (Air and Fluid) 1/4"-1/4" - 10 m		151.28

W-200 INTEGRA - SUCTION